

**PATHMAKERS**

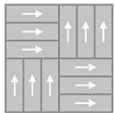
**Pollinator Path GT362**

12 in x 36 in Carpet Tile



<b>Collection</b>	Pathmakers
<b>Style</b>	Pollinator Path (GT362)
<b>Product Type</b>	Carpet Tile
<b>Size</b>	12 in x 36 in
<b>Construction</b>	Pattern Perfect
<b>Surface Appearance</b>	Textured Patterned Loop
<b>Fiber</b>	Duracolor® Tricor Premium Nylon
<b>Dye Method</b>	Solution Dyed
<b>Stain Release Technology</b>	Permanent, Built into the Fiber
<b>Soil Release Technology</b>	EcoSentry Soil Protection
<b>Backing</b>	Ecoflex One
<b>Tufted Pile Weight</b>	22 oz/yd2 (746 g/m2)
<b>Pile Height</b>	0.107
<b>Gauge</b>	1/12 (47.00 rows per 10cm)
<b>Stitches per Inch</b>	9 (35.4 per 10cm)
<b>Pile Thickness</b>	0.107
<b>Total Thickness</b>	0.352 "
<b>Density</b>	7402
<b>Installation</b>	FlexLok
<b>Recommended Adhesive</b>	Enpress, M700 Plus, FlexLok+ Tabs, Total Bond

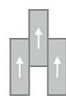
**Recommended Installation Methods**



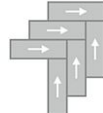
Basket Weave



Brick Ashlar



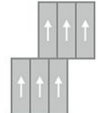
Half Lap



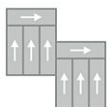
Herringbone



Monolithic



Monolithic Stepping



Plank Half Lap

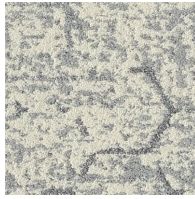


Random

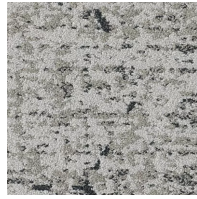
## Colorways



**Dewdrop Dark**  
Color: 565



**Serene Light**  
Color: 729



**Birdsong Light**  
Color: 739



**Dewdrop Light**  
Color: 745



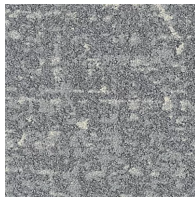
**Wildwood Light**  
Color: 829



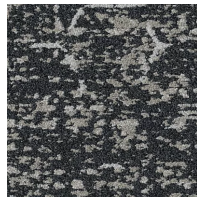
**Oud Light**  
Color: 859



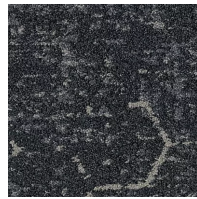
**Wildwood Dark**  
Color: 868



**Serene Dark**  
Color: 927



**Birdsong Dark**  
Color: 938



**Oud Dark**  
Color: 978



**Nocturnal Gold**  
Color: 981



**Nocturnal Silver**  
Color: 987



**Nocturnal Light**  
Color: 989

## Testing

<b>TARR Rating</b>	Severe
<b>Flammability</b>	(ASTM E648) Class 1 - Glue Down
<b>Static Propensity</b>	(AATC 134) Under 3.5 KV
<b>Smoke Density</b>	(ASTM E662) Less than 450

## Sustainability

<b>Embodied Carbon</b>	5.06 kg CO2e/m2
<b>Carbon Handprint</b>	-5.31 kg CO2e/m2
<b>Beyond Carbon Neutral</b>	-0.25 kg CO2e/m2
<b>Total Recycled Content</b>	72.75%
<b>Pre-Consumer Recycled Content</b>	63.56%
<b>Post-Consumer Recycled Content</b>	9.19%
<b>Multi-Attribute Certification</b>	Living Product Challenge
<b>EPD</b>	<a href="#">EcoFlex ONE EPD</a>

<b>HPD</b>	<a href="#"><u>EcoFlex ONE HPD</u></a>
<b>Material Health</b>	Declare Red List Free
<b>NSF 140</b>	EcoFlex ONE- NSF 140 Platinum
<b>Indoor Air Quality</b>	GLP 1171
<b>Mindful Materials</b>	Participates
<b>MindClick Rating</b>	Leader
<b>End of Life</b>	<a href="#"><u>ReCover</u></a>
<b>Country Of Origin</b>	USA

## Packaging

---

<b>Square Yards Per Carton</b>	4.67
<b>Pieces Per Carton</b>	14
<b>Cartons Per Pallet</b>	44

## Warranties

---

[Lifetime Limited Carpet Tile Warranty](#)

[Lifetime Limited Duracolor Stain Warranty](#)