

**MULTISENSORY**

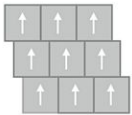
Whispered Layers GT373

24 in x 24 in Carpet Tile

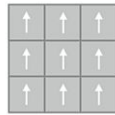


<b>Collection</b>	MultiSensory
<b>Style</b>	Whispered Layers (GT373)
<b>Product Type</b>	Carpet Tile
<b>Size</b>	24 in x 24 in
<b>Construction</b>	Tufted
<b>Surface Appearance</b>	Textured Patterned Loop
<b>Fiber</b>	Duracolor® Tricor Premium Nylon
<b>Dye Method</b>	Solution Dyed
<b>Stain Release Technology</b>	Permanent, Built into Fiber
<b>Soil Release Technology</b>	EcoSentry Soil Protection
<b>Backing</b>	Ecoflex One
<b>Tufted Pile Weight</b>	34 oz/yd <sup>2</sup> (1153 g/m <sup>2</sup> )
<b>Pile Height</b>	0.172
<b>Gauge</b>	1/12 (47.00 rows per 10cm)
<b>Stitches per Inch</b>	9.5 (37.4 per 10cm)
<b>Pile Thickness</b>	0.172
<b>Total Thickness</b>	0.318 "
<b>Density</b>	7116
<b>Installation</b>	FlexLok, Glue Down
<b>Recommended Adhesive</b>	Enpress, M700 Plus, FlexLok+ Tabs, Total Bond

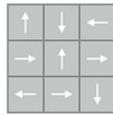
**Recommended Installation Methods**



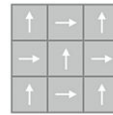
Brick Ashlar



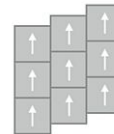
Monolithic



Multi Directional

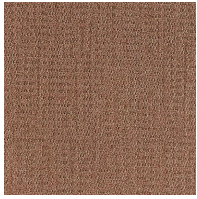


Quarter Turn

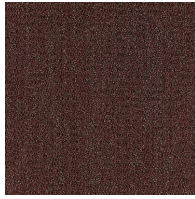


Vertical Ashlar

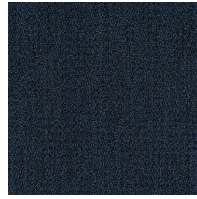
## Colorways



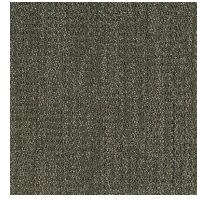
**Molten Sienna**  
Color: 242



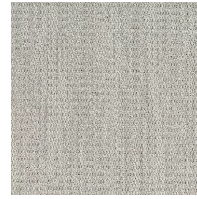
**Autumn Glow**  
Color: 363



**Ocean Breeze**  
Color: 575



**Woodland Hush**  
Color: 646



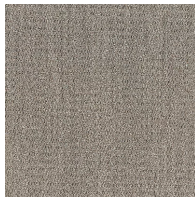
**Smoked Linen**  
Color: 737



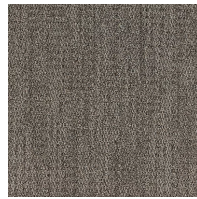
**Driftwood Echo**  
Color: 827



**Gilded Honey**  
Color: 831



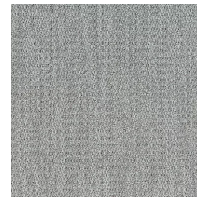
**Feathered Clay**  
Color: 848



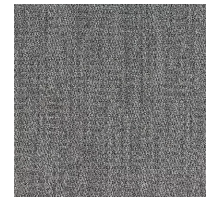
**Oud Reflection**  
Color: 868



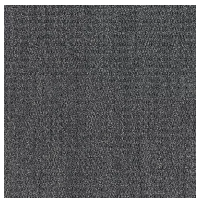
**Cedar Mirage**  
Color: 878



**Wistful Mountain**  
Color: 929



**Silken Steel**  
Color: 939



**Echoing Granite**  
Color: 969



**Spiced Noir**  
Color: 989

## Testing

<b>TARR Rating</b>	Heavy
<b>GSA Stain Release</b>	Pass
<b>Flammability</b>	(ASTM E648) Class 1 - Glue Down
<b>Static Propensity</b>	(AATC 134) Under 3.5 KV
<b>Smoke Density</b>	(ASTM E662) Less than 450

## Sustainability

<b>Embodied Carbon</b>	5.86 kg CO <sub>2</sub> e/m <sup>2</sup>
<b>Carbon Handprint</b>	-6.15 kg CO <sub>2</sub> e/m <sup>2</sup>
<b>Beyond Carbon Neutral</b>	-0.29 kg CO <sub>2</sub> e/m <sup>2</sup>
<b>Total Recycled Content</b>	72.75%
<b>Pre-Consumer Recycled Content</b>	63.56%
<b>Post-Consumer Recycled Content</b>	9.19%
<b>EPD</b>	<a href="#">EcoFlex ONE EPD</a>

HPD

[EcoFlex ONE HPD](#)

NSF 140

[EcoFlex ONE - NSF 140 Platinum](#)

Indoor Air Quality

GLP 1171

Country Of Origin

USA

## Packaging

---

Square Yards Per Carton

6.22

Pieces Per Carton

14

Cartons Per Pallet

20

## Warranties

---

[Lifetime Limited Carpet Tile Warranty](#)

[Lifetime Limited Duracolor Stain Warranty](#)