

MULTISENSORY

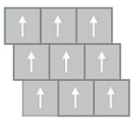
Spectral View GT375

24 in x 24 in Carpet Tile

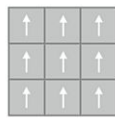


Collection	MultiSensory
Style	Spectral View (GT375)
Product Type	Carpet Tile
Size	24 in x 24 in
Construction	Pattern Perfect
Surface Appearance	Textured Patterned Loop
Fiber	Duracolor® Tricor Premium Nylon
Dye Method	Solution Dyed
Stain Release Technology	Permanent, Built into Fiber
Soil Release Technology	EcoSentry Soil Protection
Backing	Ecoflex One
Tufted Pile Weight	30 oz/yd2 (1017 g/m2)
Pile Height	0.163
Gauge	1/12 (47.00 rows per 10cm)
Pile Thickness	0.163
Total Thickness	0.454 "
Density	6626
Installation	FlexLok, Glue Down
Recommended Adhesive	Enpress, M700 Plus, FlexLok+ Tabs, Total Bond

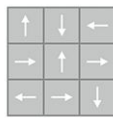
Recommended Installation Methods



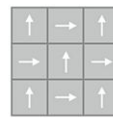
Brick Ashlar



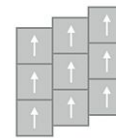
Monolithic



Multi Directional



Quarter Turn

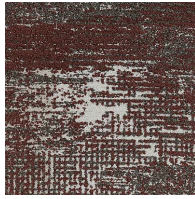


Vertical Ashlar

Colorways



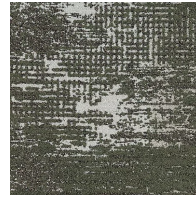
Flecked Ember
Color: 232



Veiled Merlot
Color: 373



Midnight Ink
Color: 565



Faded Moss
Color: 656



Alabaster Fade
Color: 747



Soft Umber
Color: 838



Blush Trace
Color: 843



Mosslight
Color: 846



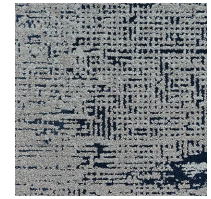
Mist Veil
Color: 859



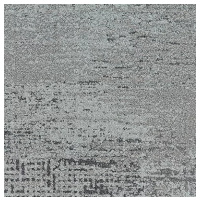
Hushed Bronze
Color: 877



Ashen Fable
Color: 938



Cloudform
Color: 945



Slate Whisper
Color: 959



Greystone
Color: 977

Testing

TARR Rating	Heavy
GSA Stain Release	Pass
Flammability	(ASTM E648) Class 1 - Glue Down
Static Propensity	(AATC 134) Under 3.5 KV
Smoke Density	(ASTM E662) Less than 450

Sustainability

Embodied Carbon	5.33 kg CO ₂ e/m ²
Carbon Handprint	-5.6 kg CO ₂ e/m ²
Beyond Carbon Neutral	-0.27 kg CO ₂ e/m ²
Total Recycled Content	72.75%
Pre-Consumer Recycled Content	63.56%
Post-Consumer Recycled Content	9.19%
EPD	EcoFlex ONE EPD
HPD	EcoFlex ONE HPD

NSF 140

[EcoFlex ONE - NSF 140 Platinum](#)

Country Of Origin

USA

Packaging

Square Yards Per Carton

6.22

Pieces Per Carton

14

Cartons Per Pallet

20

Warranties

[Lifetime Limited Carpet Tile Warranty](#)

[Lifetime Limited Duracolor Stain Warranty](#)